

# Mateksys F405-std

**Produktkode:** 733aa

**Tilgjengelighet:** 1

**Custom Field 5 (Location):** S125a

**Ring/SMS etter pris:** 91166668

## Short Description

Mateksys F405-std

## Beskrivelse

<https://www.mateksys.com/?portfolio=f405-std#tab-id-1>

<https://ardupilot.org/copter/docs/common-matekf405.html>

## Highlights

3 x LEDs for FC STATUS (Blue, Red) and 3.3V indicator(Red)

6 x PWM / DShot outputs without conflict

2 x 2812LED outputs option

5 x UARTs

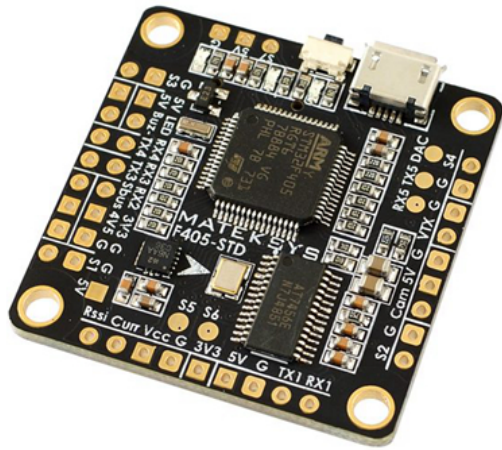
1 x Group of 5V/G/S1/S2/S3/S4 pads for 4in1 ESC Signal/GND

4 x pairs of corner pads for ESC Signal/GND connections (DSHOT compatible)

1 x pair I2C1 pads

1 x Side-press button for BOOT(DFU) mode

1 x 16pin bottom mounted FFC Slot for FCHUB-6S, FCHUB-VTX or FCHUB-W connection



## MATEKSYS Flight Controller F405-STD

- \* 168MHz STM32F405RGT6
- \* 6-Axis ICM20602
- \* BetaFlight OSD
- \* BMP280 Barometer
- \* MicroSD BlackBox
- \* VCP & 5x UARTS
- \* 6 PWM/DSHOT outputs
- \* I2C1 & DAC
  
- \* MATEKF405 Target

## Specification

<p><b>General</b></p>	<p>Brand: Matek System  Item No.: F405-STD  MCU: 168MHz STM32F405RGT6  IMU: 32K ICM20602 gyro/accelerometer (SPI)  Baro: BMP280 (I2C)  OSD: BetaFlight OSD w/ AT7456E chip  Blackbox: MicroSD card slot (SD/SDHC)  VCP, UART1, UART2, UART3, UART4, UART5  Built in inverter for SBUS input (UART2-RX)  PPM/UART Shared: UART2-RX  SoftSerial on TX2, S5 or S6 optional  Camera control on S6 or DAC optional  Smartaudio &amp; Tramp VTX protocol supported  Battery Voltage Sensor: 1:10  Current Sensor: No (FCHUB-6S, FCHUB-VTX, FCHUB-W option)  BEC 5V: No (FCHUB-6S, FCHUB-VTX,</p>
-----------------------	--

	FCHUB-W option) LDO 3.3V: Max.300mA I2C1 SDA & SCL: Yes WS2812 Led Strip : Yes Beeper : Yes RSSI: Yes 36x36mm PCB with 30.5mm mounting holes
<b>Package Contents</b>	1 x Flight Controller 2 x 0.5mm*16Pin 5cm Flexible Flat Cable 4 x M3 Anti-vibration Standoffs

Customer Photos

### **CO**nfiguration

<https://www.youtube.com/watch?v=DJipfp28rUc>

**Product Gallery**