

WEMOS Lolin32

Produktkode: 373aa

Tilgjengelighet: Opp til 1 mnd leveringstid

Custom Field 5 (Location): N 11

Pris: kr. 130,00

Short Description

4 MB Flash WEMOS Lolin32 CP2104 WIFI & Bluetooth Card Based ESP-32 ESP-WROOM-32

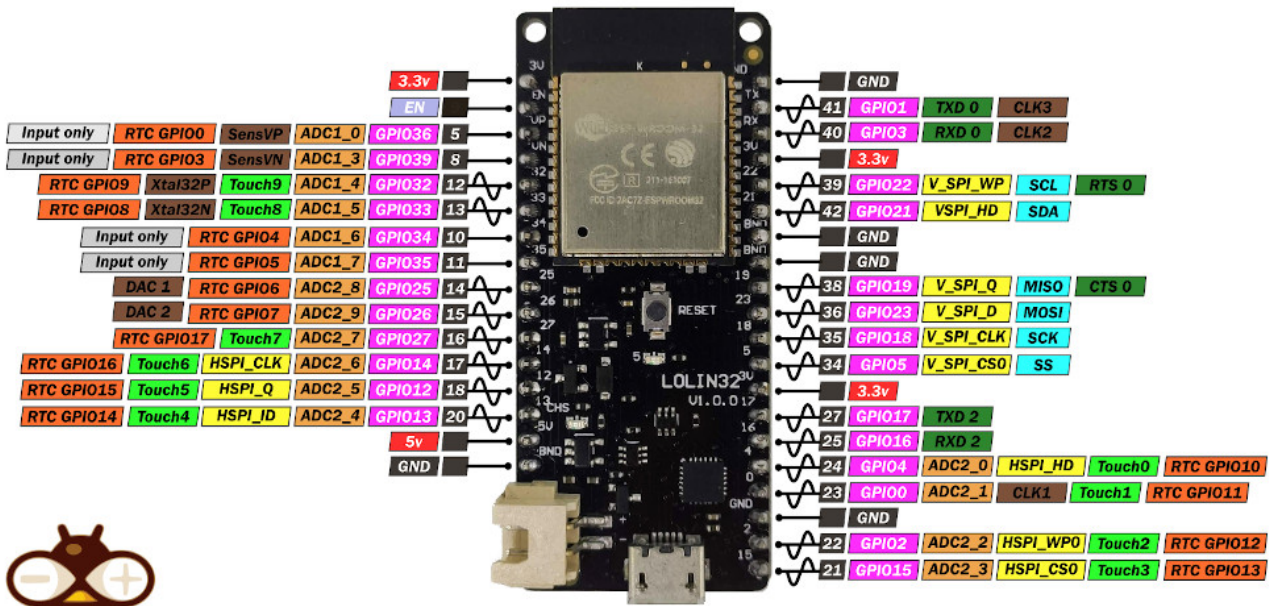
Beskrivelse

- Processors:
 - CPU: Xtensa dual-core (or single-core) 32-bit LX6 microprocessor, operating at 160 or 240 MHz and performing at up to 600 [DMIPS](#)
 - Ultra low power (ULP) co-processor
- Memory: 520 KiB SRAM
- Wireless connectivity:
 - Wi-Fi: [802.11](#) b/g/n
 - Bluetooth: v4.2 BR/EDR and BLE (shares the radio with Wi-Fi)
- Peripheral interfaces:
 - 12-bit [SAR ADC](#) up to 18 channels
 - 2 × 8-bit [DACs](#)
 - 10 × touch sensors ([capacitive sensing](#) GPIOs)
 - 4 × [SPI](#)
 - 2 × [I²S](#) interfaces
 - 2 × [I²C](#) interfaces
 - 3 × [UART](#)
 - [SD/SDIO/CE-ATA/MMC/eMMC](#) host controller
 - SDIO/SPI slave controller
 - [Ethernet](#) MAC interface with dedicated DMA and [IEEE 1588 Precision Time Protocol](#) support
 - [CAN bus](#) 2.0
 - Infrared remote controller (TX/RX, up to 8 channels)

- Motor [PWM](#)
- LED [PWM](#) (up to 16 channels)
- [Hall effect sensor](#)
- Ultra low power analog pre-amplifier
- Security:
 - IEEE 802.11 standard security features all supported, including WPA, WPA/WPA2 and [WAPI](#)
 - Secure boot
 - Flash encryption
 - 1024-bit OTP, up to 768-bit for customers
 - Cryptographic hardware acceleration: [AES](#), [SHA-2](#), [RSA](#), [elliptic curve cryptography](#) (ECC), [random number generator](#) (RNG)
- Power management:
 - Internal [low-dropout regulator](#)
 - Individual power domain for RTC
 - 5µA deep sleep current
 - Wake up from GPIO interrupt, timer, ADC measurements, capacitive touch sensor interrupt
- **Battery management**
 - Connector for 3.7v battery (like 18650).

Pinout

ESP32 WeMos LOLIN32 PINOUT



www.mischianti.org (CC) BY-NC-ND



Erfaringsavvik

- Analoge inputs forstyrres når WiFi er aktiv. Gjelder portene 0, 2,4,12,13,14,15,25,26,27.
- Analoge inputs er ustabile.

Serieporter: <https://circuits4you.com/2018/12/31/esp32-hardware-serial2-example/>

UART	RX IO	TX IO	CTS	RTS
UART0	GPIO3	GPIO1	N/A	N/A
UART1	GPIO9	GPIO10	GPIO6	GPIO11
UART2	GPIO16	GPIO17	GPIO8	GPIO7

Projekter

[Kontroll batteri bobil](#)

Product Gallery